

CILINDRI A PROFILO PULITO INOX Ø32-63

CLEAN PROFILE CYLINDERS Ø32-63



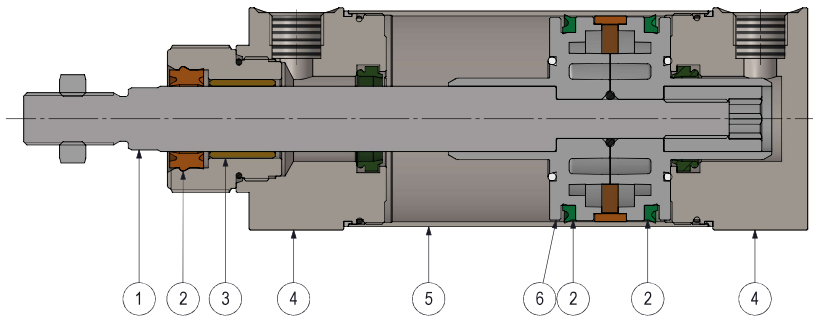
Cilindri tondi inox a profilo pulito disponibili da Ø32 a Ø63 in versione doppio effetto, ammortizzato e non, magnetico e non e con stelo standard o passante.

- Interamente in acciaio inox AISI316
- Guarnizioni in PU per alte performance e lunga durata
- Guarnizione stelo approvata FDA

Round stainless steel cylinders with clean profile available from Ø32 up to Ø63, in double acting version, cushioned or not, magnetic or not and with standard or through rod.

- Entirely made in stainless steel AISI316
- High and long-lasting performances thanks to PU seals
- FDA approved piston rod seal

MATERIALI STANDARD / STANDARD MATERIALS



Stelo <i>Piston rod</i>	Acciaio inox AISI316 <i>Stainless steel AISI316</i>
Guarnizioni <i>Seals</i>	Poliuretano / NBR <i>Polyurethane / NBR</i>
Boccola di guida <i>Guiding bush</i>	Bronzo sinterizzato <i>Sintered bronze</i>
Testate <i>Covers</i>	Acciaio inox AISI316 <i>Stainless steel AISI316</i>
Tubo <i>Tube</i>	Acciaio inox AISI316 <i>Stainless steel AISI316</i>
Pistone <i>Piston</i>	Alluminio <i>Aluminum</i>

INFORMAZIONI TECNICHE / TECHNICAL INFORMATION

Fluido <i>Fluid</i>	Aria compressa filtrata lubrificata e non <i>Filtered and lubricated or not compressed air</i>
Temperatura impiego <i>Working temperature</i>	-30°C +80°C con aria secca <i>-30°C +80°C with dry air</i>
Pressione massima <i>Max pressure</i>	10 bar <i>10 bar</i>

CHIAVE DI CODIFICA / KEY CODE

Serie Serie	Versione Version					Diametro Diameter	Corsa Stroke
PI	D	S	0	M	N	050	0100



D Doppio effetto <i>Double acting</i>	S Cerniera maschio snodata MP6 <i>Male hinge w spherical head MP6</i>	0 Standard <i>Standard</i>	M Magnetico <i>Magnetic</i>	A Ammortizzato <i>Cushioned</i>	032 Ø32	XXXX corsa <i>stroke</i>
	M Cerniera maschio MP4 <i>MP4 male hinge</i>	1 Passante <i>Through rod</i>	N Non magnetico <i>Not magnetic</i>	N Non ammortizz. <i>Not cushioned</i>	040 Ø40	
	F Cerniera femmina stretta AB6 <i>Narrow female hinge AB6</i>				050 Ø50	
	A Testata anteriore filettata <i>Threaded front cover</i>				063 Ø63	
	B Entrambe le testate filettate <i>Threaded covers</i>					
	T Testata posteriore con fori filettati <i>Threaded holes on rear cover</i>					
	P Perni anteriori <i>Front pivots</i>					
	R Perni posteriori <i>Rear pivots</i>					

VARIANTI STANDARD / STANDARD VARIANTS

Guarnizioni Seals	Prolunga stelo Extended piston rod	Filetto speciale Special piston rod thread
HA	P020	
HR Stelo Viton <i>Viton rod seal</i>	PXXX P + mm <i>P + mm</i>	Su richiesta <i>On request</i>
HA Tutto Viton <i>All Viton</i>		
LT Bassa temp. <i>Low temp.</i>		

CORSE STANDARD / STANDARD STROKES

Ø	10	25	50	80	100	125	160	200	250	320	400	500
32	*	*	*	*	*	*	*	*	*	*	*	*
40	*	*	*	*	*	*	*	*	*	*	*	*
50	*	*	*	*	*	*	*	*	*	*	*	*
63	*	*	*	*	*	*	*	*	*	*	*	*

CILINDRI A PROFILO PULITO INOX Ø32-63

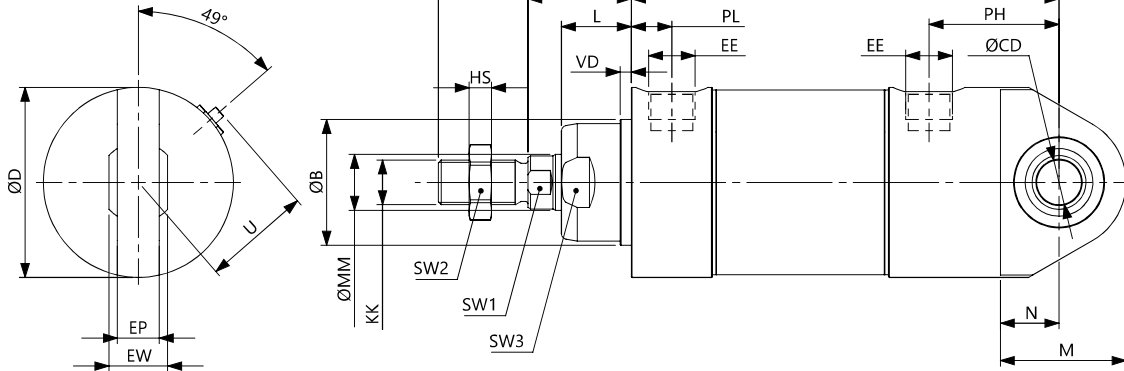
CLEAN PROFILE CYLINDERS Ø32-63

DOPPIO EFFETTO CON CERNIERA SNODATA MP6

DOUBLE ACTING W MP6 SPHERICAL HINGE



PIDS0MN



Ø	A	ØB	ØCD	ØD	EE	EP	EW	KK	ØMM	N	M	PH	PL	L	VD	U	WH	XC	ZN	ZJ	SW1	SW2	SW3	HS
32	22	30	10	36	1/8G	10,5	14	M10X1,25	12	13	28	32,5	10,5	20	4	26,5	26	116	142	179	10	17	29	6
40	24	35	12	45	1/4G	12,5	16	M12X1,25	16	16	35	37	12,5	22	4	31	30	130	160	203	13	19	33	7
50	32	40	12	54	1/4G	15	21	M16X1,5	20	16,5	36,5	38,5	11,5	26	4	39,5	37	133	170	222,5	17	24	38	8
63	32	45	16	68	3/8G	15	21	M16X1,5	20	21	41	46,5	14,5	25	4	38,5	37	153	190	246	17	24	42	8

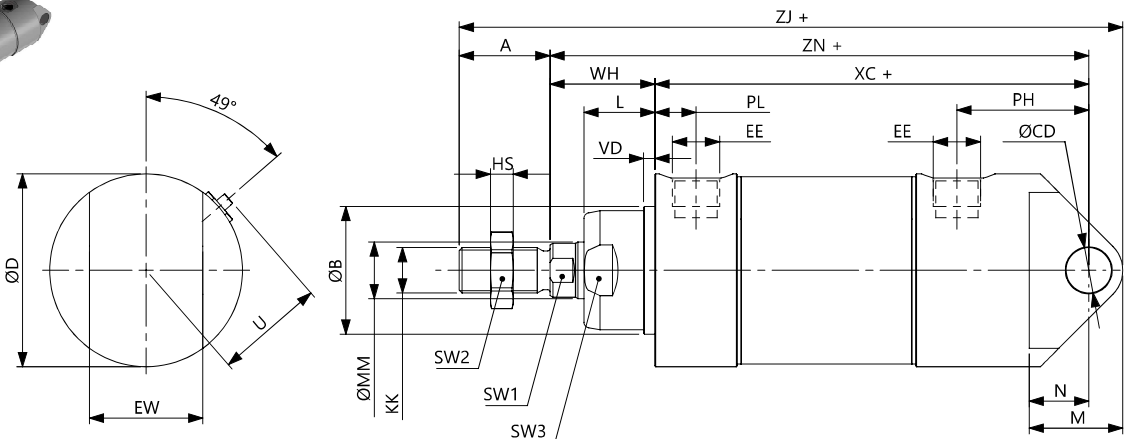
+ = sommare corsa / plus stroke length

DOPPIO EFFETTO CON CERNIERA MASCHIO MP4

DOUBLE ACTING W MP4 MALE HINGE



PIDM0MN

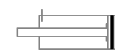


Ø	A	ØB	ØCD	ØD	EE	EW	KK	ØMM	N	M	PH	PL1	L	VD	U	WH	XC	ZN	ZJ	SW1	SW2	SW3	HS
32	22	30	10	36	1/8G	26	M10X1,25	12	13	22	32,5	10,5	20	4	26,5	26	116	142	173	10	17	29	6
40	24	35	12	45	1/4G	28	M12X1,25	16	16	26	37	12,5	22	4	31	30	130	160	194	13	19	33	7
50	32	40	12	54	1/4G	32	M16X1,5	20	16,5	28,5	37	11,5	26	4	39,5	37	133	170	214	17	24	38	8
63	32	45	16	68	3/8G	40	M16X1,5	20	21	33	46	14,5	25	4	38,5	37	153	190	234	17	24	42	8

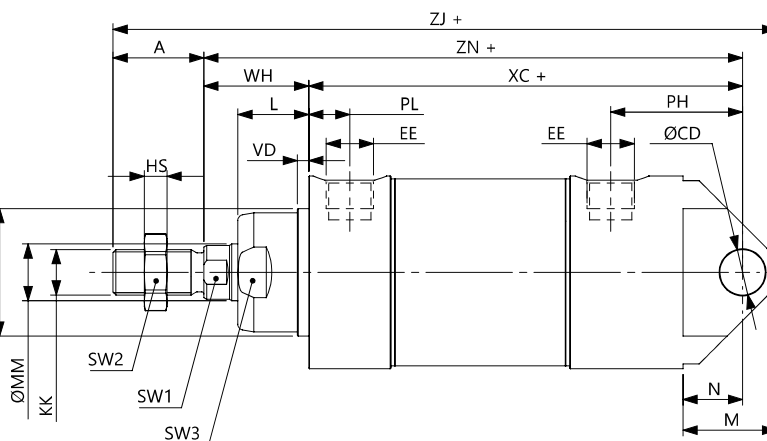
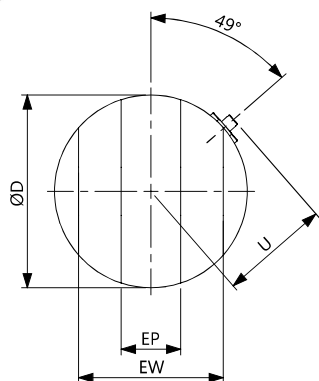
+ = sommare corsa / plus stroke length

Cilindri INOX a profilo pulito Ø32-63 - Clean profile round cylinders Ø32-63

DOPPIO EFFETTO CON CERNIERA STRETTA AB6 DOUBLE ACTING W NARROW FEMALE HINGE AB6



PIDF0MN



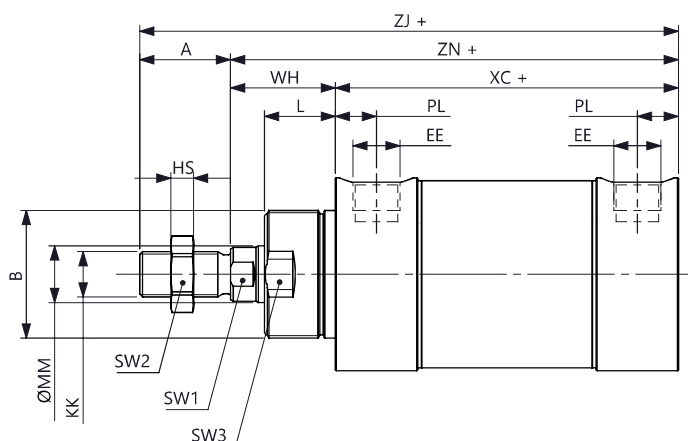
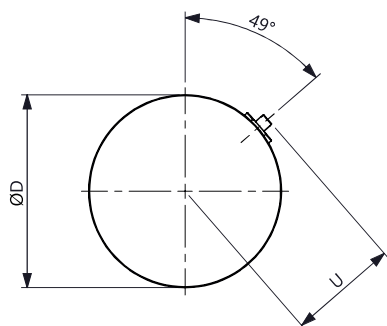
Ø	A	ØB	ØCD	ØD	EE	EP	EW	KK	ØMM	N	M	PH	PL	L	VD	U	WH	XC	ZN	ZJ	SW1	SW2	SW3	HS
32	22	30	10	36	1/8G	14	34	M10X1,25	12	13	22	32,5	10,5	20	4	26,5	26	116	142	173	10	17	29	6
40	24	35	12	45	1/4G	16	40	M12X1,25	16	16	26	37	12,5	22	4	31	30	130	160	194	13	19	33	7
50	32	40	12	54	1/4G	21	45	M16X1,5	20	16,5	28,5	37	11,5	26	4	39,5	37	133	170	214	17	24	38	8
63	32	45	16	68	3/8G	21	51	M16X1,5	20	21	33	46	14,5	25	4	38,5	37	153	190	234	17	24	45	8

+ = sommare corsa / plus stroke length

DOPPIO EFFETTO CON TESTATA ANTERIORE FILETTATA DOUBLE ACTING W THREADED FRONT COVER



PIDA0MN



Ø	A	ØB	ØD	EE	KK	ØMM	PL	L	VD	U	WH	XC	ZN	ZJ	SW1	SW2	SW3	HS
32	22	M30X1,5	36	1/8G	M10X1,25	12	10,5	20	4	26,5	26	94	120	142	10	17	29	6
40	24	M38X1,5	45	1/4G	M12X1,25	16	12,5	22	4	31	30	105	35	159	13	19	33	7
50	32	M45X1,5	54	1/4G	M16X1,5	20	11,5	26	4	39,5	37	106	143	175	17	24	38	8
63	32	M45X1,5	68	3/8G	M16X1,5	20	14,5	25	4	38,5	37	121	158	190	17	24	42	8

+ = sommare corsa / plus stroke length

CILINDRI A PROFILO PULITO INOX Ø32-63

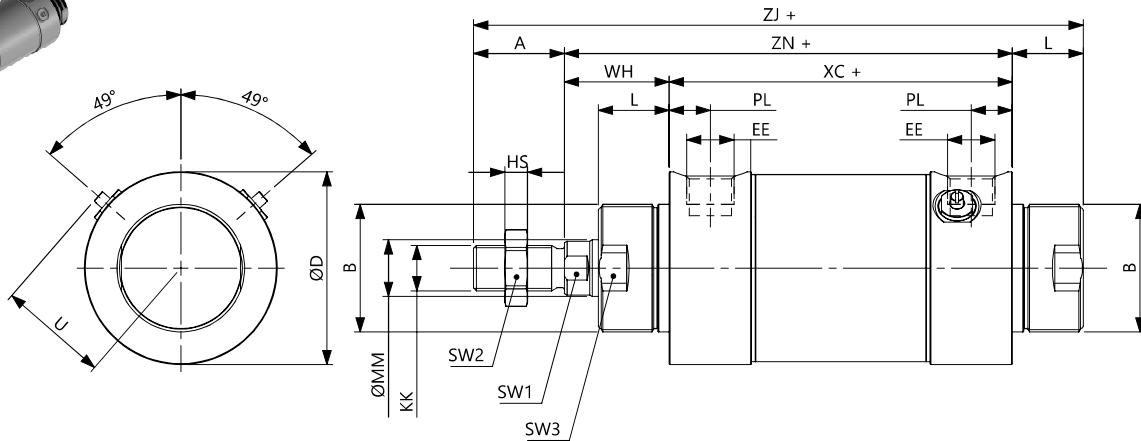
CLEAN PROFILE CYLINDERS Ø32-63

DOPPIO EFFETTO CON TESTATE FILETTATE

DOUBLE ACTING THREADED COVERS



PIDB0MN



Ø	A	ØB	ØD	EE	KK	ØMM	PL	L	VD	U	WH	XC	ZN	ZJ	SW1	SW2	SW3	HS
32	22	M30X1,5	36	1/8G	M10X1,25	12	10,5	20	4	26,5	26	94	140	162	10	17	29	6
40	24	M38X1,5	45	1/4G	M12X1,25	16	12,5	22	4	31	30	105	157	181	13	19	33	7
50	32	M45X1,5	54	1/4G	M16X1,5	20	11,5	26	4	39,5	37	106	169	201	17	24	38	8
63	32	M45X1,5	68	3/8G	M16X1,5	20	14,5	25	4	38,5	37	121	183	215	17	24	42	8

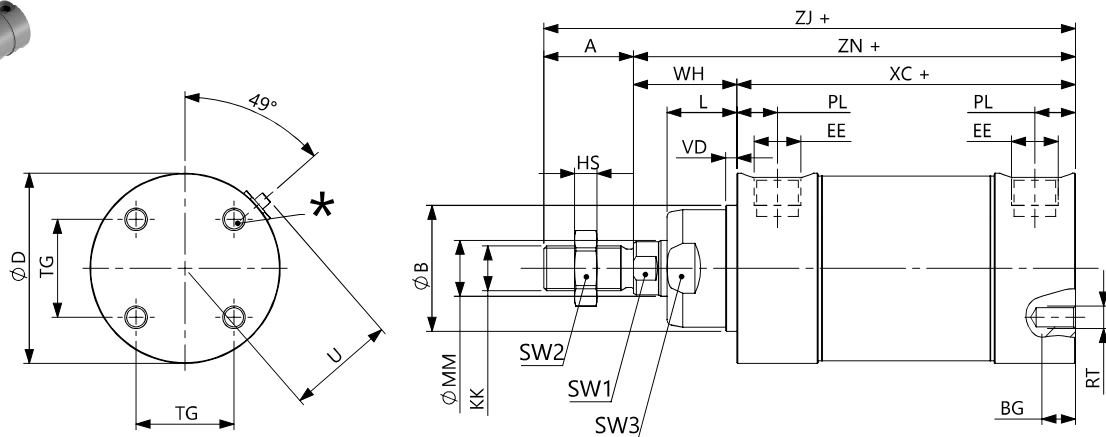
+ = sommare corsa / plus stroke length

DOPPIO EFFETTO CON TESTATA POSTERIORE CON FORI

DOUBLE ACTING W HOLES ON REAR COVER



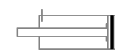
PIDT0MN



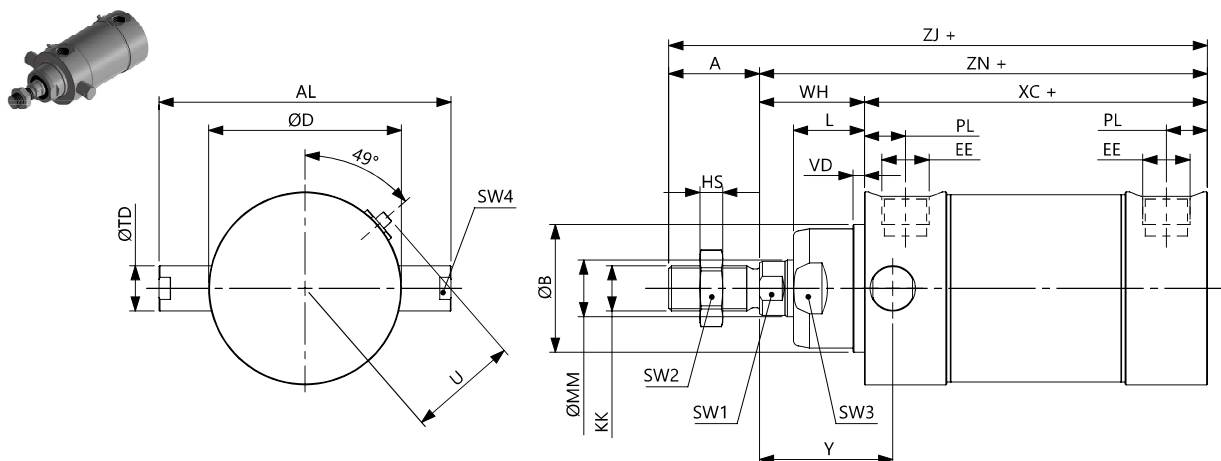
Ø	A	ØB	BG	ØD	EE	KK	ØMM	PL	RT	TG	L	VD	U	WH	XC	ZN	ZJ	SW1	SW2	SW3	HS
32	22	30	6	36	1/8G	M10X1,25	12	10,5	M4	19	20	4	26,5	26	94	120	142	10	17	29	6
40	24	35	8	45	1/4G	M12X1,25	16	12,5	M5	24	22	4	31	30	105	135	159	13	19	33	7
50	32	40	9	54	1/4G	M16X1,5	20	11,5	M6	28	26	4	39,5	37	106	143	175	17	24	38	8
63	32	45	12	68	3/8G	M16X1,5	20	14,5	M8	35	25	4	38,5	37	121	158	190	17	24	42	8

* Nell'alesaggio Ø63 mm foro filettato non presente - For bore Ø63 mm threaded hole absent

DOPPIO EFFETTO CON PERNI ANTERIORI DOUBLE ACTING WITH FRONT PIVOTS



PIDP0MN



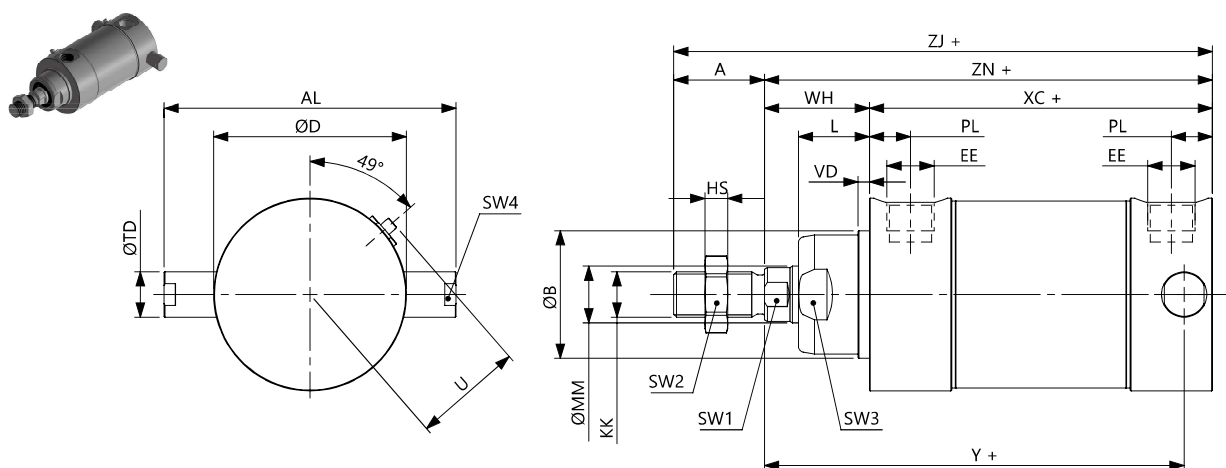
Ø	ØTD	AL	Y	A	ØB	ØD	EE	KK	ØMM	PL	L	VD	U	WH	XC	ZN	ZJ	SW1	SW2	SW3	SW4	HS
32	12	67	39	22	30	36	1/8G	M10X1,25	12	10,5	20	4	26,5	26	94	120	142	10	17	29	10	6
40	12	76	43	24	35	45	1/4G	M12X1,25	16	12,5	22	4	31	30	105	135	159	13	19	33	10	7
50	16	89	40	32	51	54	1/4G	M16X1,5	20	11,5	26	4	39,5	37	106	153	175	17	24	38	14	8
63	16	103	47	32	47	68	3/8G	M16X1,5	20	14,5	25	4	38,5	37	121	158	190	17	24	42	14	8

+ = sommare corsa / plus stroke length

DOPPIO EFFETTO CON PERNI POSTERIORI DOUBLE ACTING WITH REAR PIVOTS



PIDROMN



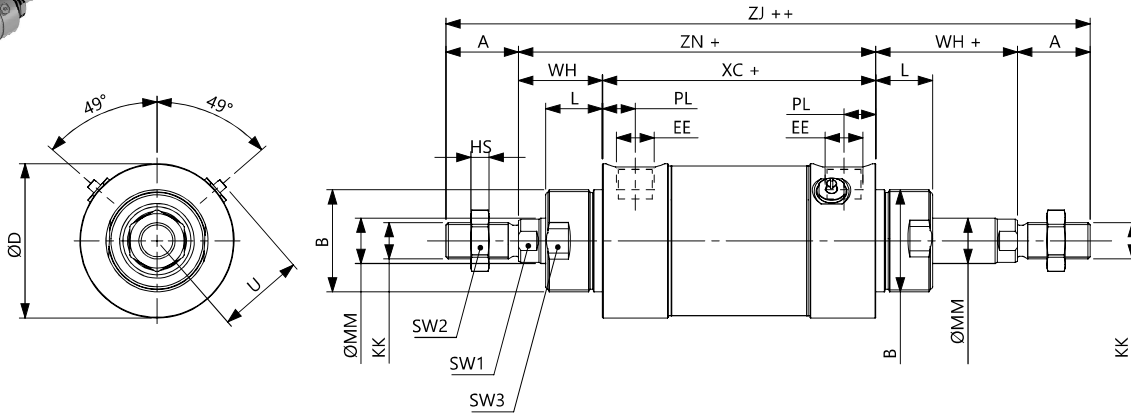
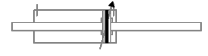
Ø	ØTD	AL	Y	A	ØB	ØD	EE	KK	ØMM	PL	L	VD	U	WH	XC	ZN	ZJ	SW1	SW2	SW3	SW4	HS
32	12	67	110	22	30	36	1/8G	M10X1,25	12	10,5	20	4	26,5	26	94	120	142	10	17	29	10	6
40	12	76	122	24	35	45	1/4G	M12X1,25	16	12,5	22	4	31	30	105	135	159	13	19	33	10	7
50	16	89	129	32	40	54	1/4G	M16X1,5	20	11,5	26	4	39,5	37	106	153	175	17	24	38	14	8
63	16	103	148	32	45	68	3/8G	M16X1,5	20	14,5	25	4	38,5	37	121	158	190	17	24	42	14	8

+ = sommare corsa / plus stroke length

CILINDRI A PROFILO PULITO INOX Ø32-63

CLEAN PROFILE CYLINDERS Ø32-63

DOPPIO EFFETTO STELO PASSANTE
DOUBLE ACTING WITH THROUGH ROD



Ø	A	B	ØD	EE	KK	ØMM	PL	L	VD	U	WH	XC	ZN	ZJ	SW1	SW2	SW3	HS
32	22	M30X1,5	36	1/8G	M10X1,25	12	10,5	20	4	26,5	26	94	120	190	10	17	29	6
40	24	M38X1,5	45	1/4G	M12X1,25	16	12,5	22	4	31	30	105	135	213	13	19	33	7
50	32	M45X1,5	54	1/4G	M16X1,5	20	11,5	26	4	39,5	37	106	143	244	17	24	38	8
63	32	M45X1,5	68	3/8G	M16X1,5	20	14,5	25	4	38,5	37	121	158	259	17	24	42	8

+ = **sommare corsa / plus stroke length**

++ = **sommare 2 x corsa / plus stroke length x 2**

